



AREC KL-3T

Portable Media Station



- All-in-One Device with 10.1-inch Touch Panel to Offer Up to 3 Full HD Video Sources Capturing, Mixing, Switching, Recording and Live Streaming
- Portable Design for Easy Move and Place
- Touch-Friendly Graphical User Interface Makes Live Production Easier

Main Features

Capture Up to 3 Video Sources at the Same Time

Via HDMI, VGA, RJ-45 interfaces or streaming inputs, KL-3T supports multiple video and audio recording at once. As users choose "mixed plus original sources mode" recording, KL-3T can provide 1 mixed video and 3 individual source videos for flexible use.



Portable Design for Easy Move

With 10.1" LCD screen, Arec KL-3T is a portable and all-in-one Media Station, allowing users to simultaneously capture, switch, mix, stream and record live/multi-sources events in demanding portable applications*.

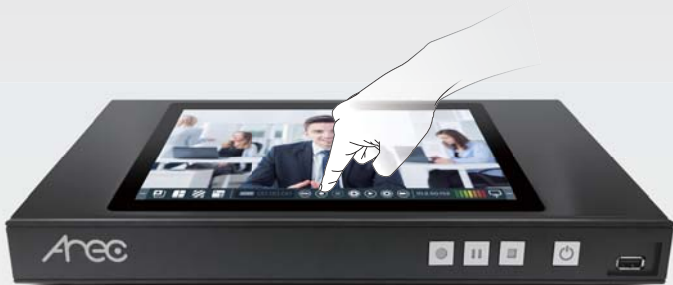
* KL Travel Case is the optional accessory.



Touch-Friendly On-Screen Graphical User Interface

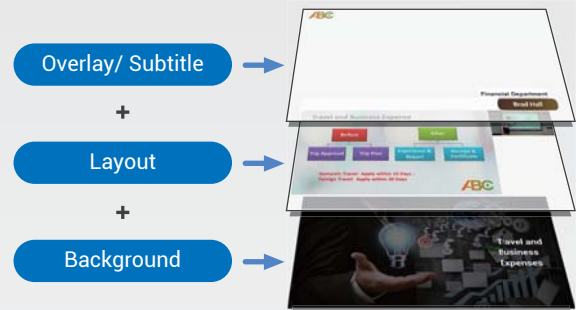
With the interactive display and built-in graphical user interface (GUI)*, KL-3T allows users to start or stop recording/streaming, change recording layouts, and playback videos with easier control. KL-3T also provides control buttons on the top of machine.

* The on-screen GUI supports mouse device control through USB connection.



Adding Titles & Graphics to Your Video

With KL-3T, users can easily switch and mix between sources, add or remove logos, backgrounds, overlay graphics, and subtitles to create their own custom and professional lecture video. KL-3T can stream mixed video to up to 2 platforms simultaneously, such as YouTube, Facebook, and other live broadcasting websites.



AREC Video Manager: Videos with Just One Click

With the built-in video management platform, administrators or teachers can manage videos stored in the local Media Station remotely. They can download, upload or delete a video file, and edit video information. With available APIs, all of the video content, metadata, and thumbnail can be delivered seamlessly for third party integration.



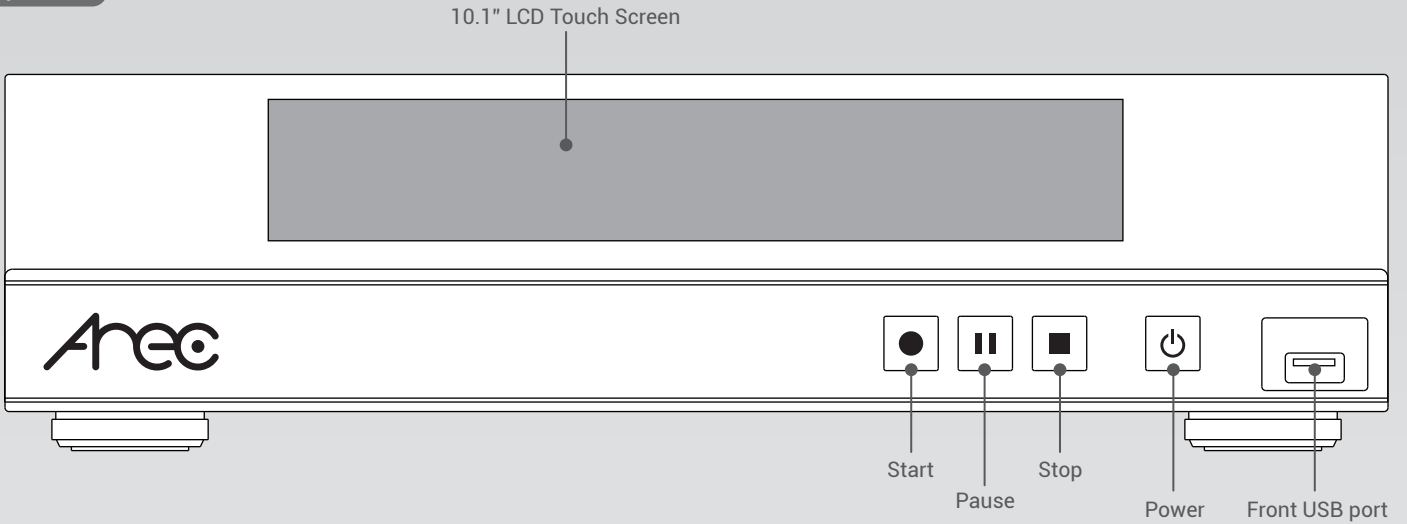
Recording and Backup

KL-3T is integrated with Panopto, Kaltura, and Opencast platforms. It can also record and save hundreds of hours recording videos with internal 1TB hard drive. KL-3T supports automatic backup and upload of recordings after their completion to Arec MediaCenter, FTP, and SFTP servers, and can use NAS for storage.

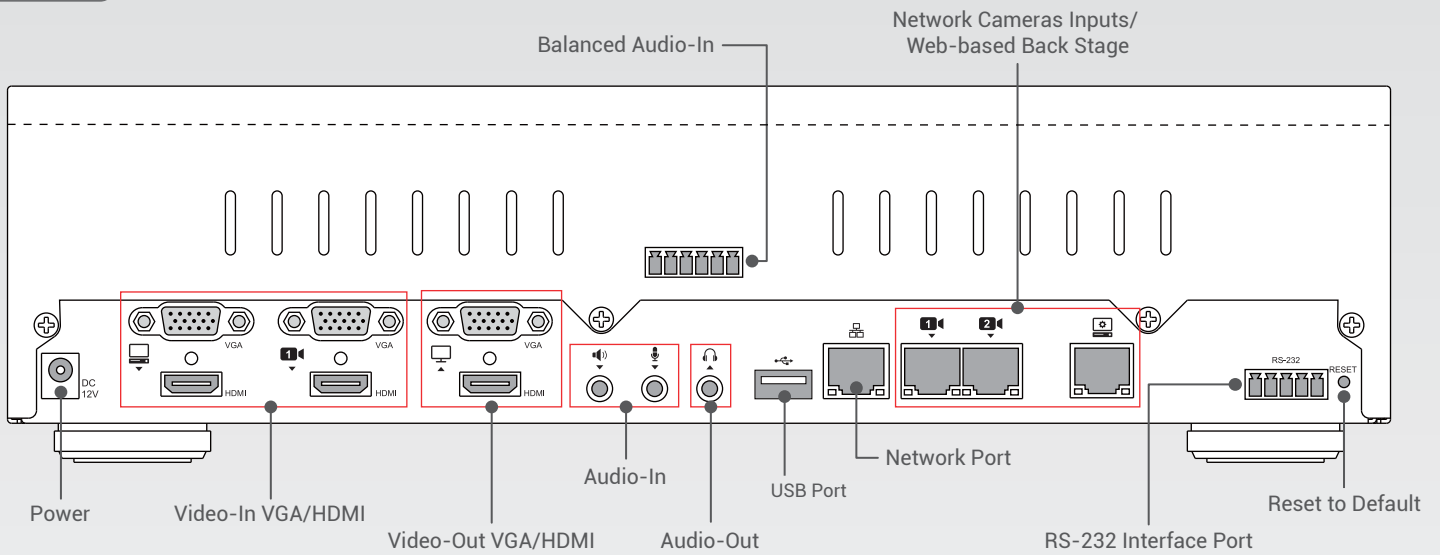


Product Interface

Top View



Back View



On-Screen Graphical User Interface



- 1 Overlay Images
- 2 Recording Layouts
- 3 Background
- 4 Custom Theme
- 5 Timer
- 6 Start / Stop Streaming
- 7 Start / Stop Recording
- 8 Snapshot
- 9 Playback Video
- 10 Setting
- 11 Camera Control
- 12 KL-3T IP Address
- 13 Audio Volumn Bar
- 14 Display Switch

* The on-screen GUI supports mouse device control through USB connection.

Specifications

Model Name	AREC KL-3T Media Station
Input Connection	
Video Input Interface	HDMI/ VGA/ RJ-45 (Supports AREC Full HD network camera and IP streaming inputs)
	Note: Supports DVI and component video cable inputs with appropriate DVI to HDMI or component to VGA adaptors
Max. Video-In channels	Maximum 3 channel synchronized recording
	HDMI/VGA: up to 2 channels Full HD network camera: up to 2 channels
Resolution Range	HDMI: 480i~1080p60 VGA: 480i~1080p60
Audio-In Channels	3.5mm Stereo Mic in: 1 channel; 3.5mm Stereo Line in: 1 channel; HDMI: 2 channels Balanced audio-in with a 6-pin Phoenix connector
Video Processing	
Compression	H.264/ AVC
Frame Rate	Max. 30fps
Bit Rate	300Kbps~8Mbps
Resolution	Max. 1080p (640x360 ~ 1920x1080)
Audio Processing	
Compression	AAC-LC
Bit Rate	80Kbps~320Kbps
Video / Audio Outputs	
Built-in Touch Screen	10.1" 1280x800 TFT LCD PCAP Touch Panel
Video Output	1x HDMI display port (with on-screen GUI) 2x H.264/AVC digital video over Ethernet
Output Resolution	1080p60
Audio Outputs	3.5mm Stereo Line out: 1 channel; HDMI: 1 channel
Streaming / Main System Output	
Streaming Delay	1 sec.
Compatible Streaming Input Protocols	RTSP, RTP, RTMP
Streaming Output Protocols	RTP, RTMP (RTMPS), RTSP
	Note : 1. Users can choose 1 output option from RTP or RTMP only 2. RTP: MPEG2-TS over RTP unicast; MPEG2-TS over RTP multicast 3. RTSP (TCP / UDP): Max 6 clients RTSP streams available via public URL (example: pulled streams)
Storage, Backup, and Compatibility	
Built-in Local Storage	1TB 2.5" SATAIII Hard Drive
External Storage	Supports USB drive recording through the front port. NAS storage is also supported
Locally Stored File Format	MP4
Backup	FTP/ SFTP
Third-Party Video Management System	Integrated with Opencast, Panopto and Kaltura

Recording	
Recording Modes	Mixed mode, 1 Mixed + 3 individual original sources
Scheduled Recording	Yes, supports iCalendar format (.ics file) for automatic recording/streaming, such as Google Calendar
Recording Layouts	Multiple default and user-defined layouts are available, including full screen/ picture-in-picture/ picture-by-picture/ multi-channel split screen
Bookmark	Automatic and manual bookmark insertion
Background Images	Multiple default and user-uploaded images are supported
On-Screen Overlay Images	Multiple default and user-uploaded images are supported
Subtitle	Text can be added manually via the built-in web interface
Custom Themes	Multiple themes can be created via the built-in web interface
Live Broadcasting	
Live Broadcast to CDN or Stream Server	Yes, support RTMP(RTMPS) protocol. Stream up to 2 platforms simultaneously
Video Information Editing	
Post Video Info Editing	Yes, through Video Manager web page
Video Info Adding	Video information can be added automatically before the video is recorded. Manual input is available before and after the recording finished.
Controls of KL-3T and Network Camera	
Touch Interface	Through built-in 10" touch screen
Mouse Device and Numeric Keypad	Through USB interface connection
Video Switcher	Yes, through AREC Online Director (web-based or SW-based application) and on-screen GUI for manual controls
External Control	Yes, supports RS-232 interface port
Control Button	Yes, on the front of the media station
Video Management Platform	Built-in video management platform: through web-based control interface
Group Management	Available via ARECcloud
Camera Control	VISCA over IP/ ONVIF profile S
General Information	
Operation System	Embedded Linux system
LCD Screen	Yes, built-in 10.1" LCD screen
Power Supply	12V/ 3A
Temperature / Humidity	0~40°C/ 90%
Dimension	354mm(L) x 188.2mm(W) x 91.4mm(H)
Weight	2.65kg(5.84lbs)
Language	SC / TC / English/ Russian/ Spanish/ Czech/ Korean/ Latvian/ German/ Estonian
Accessories	Power adapter / quick guide / VGA line/ HDMI line/ RJ-45 line/ Terminal Block/ HDMI to VGA converter*

* Please use genuine original AREC HDMI to VGA converter



AREC Inc. | www.arec.com | sales@arec.com
Address: 3F, No. 367, Sec.2, Wenhua RD., Banqiao Dist.,
New Taipei City 220, Taiwan (R.O.C)
TEL: +886-2-8259-5060

Exclusive Representative in Europe, Africa, Latin America and CIS Countries
ADENA Limited | www.a-dena.com
E-MAIL: info@a-dena.com
TEL: +886-2-8712-1882

AREC reserves the right to modify product specifications without prior notice.