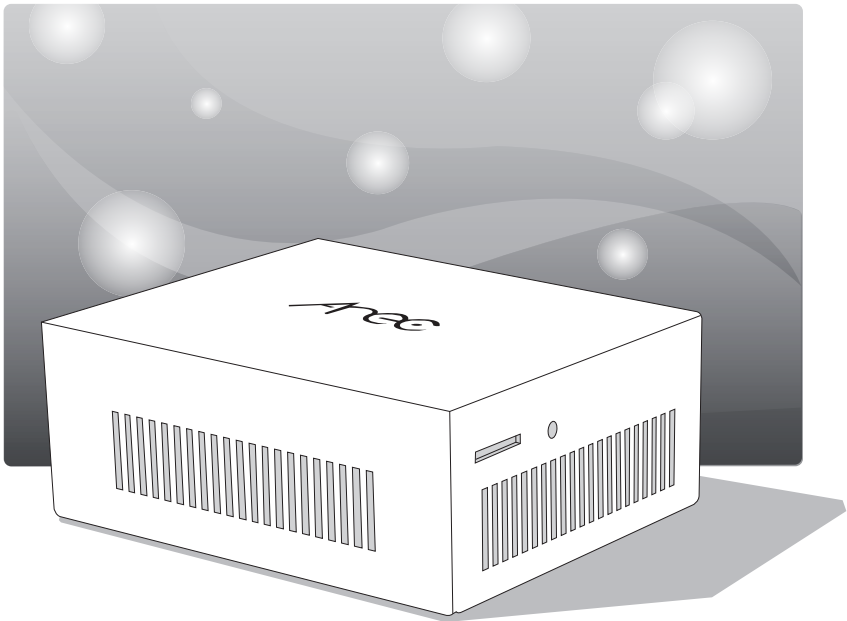




# DS-X09 Media Station

Quick Installation Guide | ENGLISH



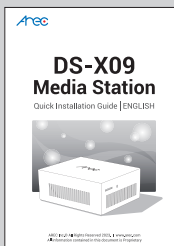
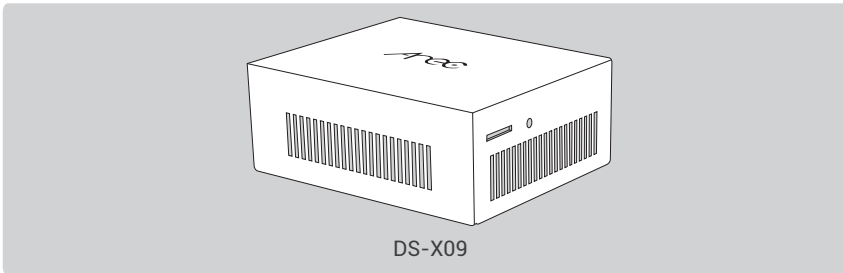
## Introduction

AREC DS-X09 Playout Station can decode IP Streaming directly, making it easy to be viewed on the local display. The IP streaming video sources can be from anywhere via an IP LAN Ethernet connection, including campus studio, real-time lecture seminar at school, live events, streaming from CDNs, video-on-demand content, IP camera viewing for insect observation or environment monitoring, and campus security.

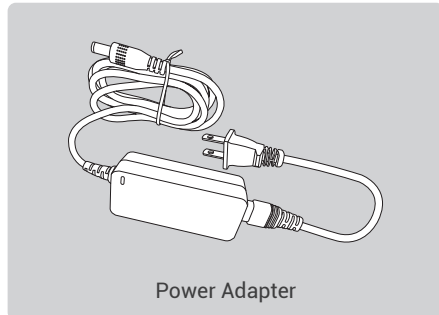
## Specifications

Product Name	Media Station
Model Name	DS-X09
Dimension	95mm(L) x 80mm(W) x 38mm(H)
Weight	330g
Power Requirement	12V
Power Consumption (Max.)	40W (Max.)
Operating Temperature / Humidity	0°C ~ 40°C / 90%
Maximum normal load description	Insert 1 RJ-45 line to Ethernet port. And output the transcoded video/audio via the HDMI port.

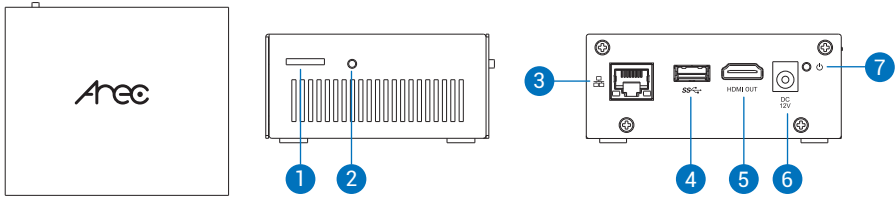
## Package Contents



Quick Installation Guide

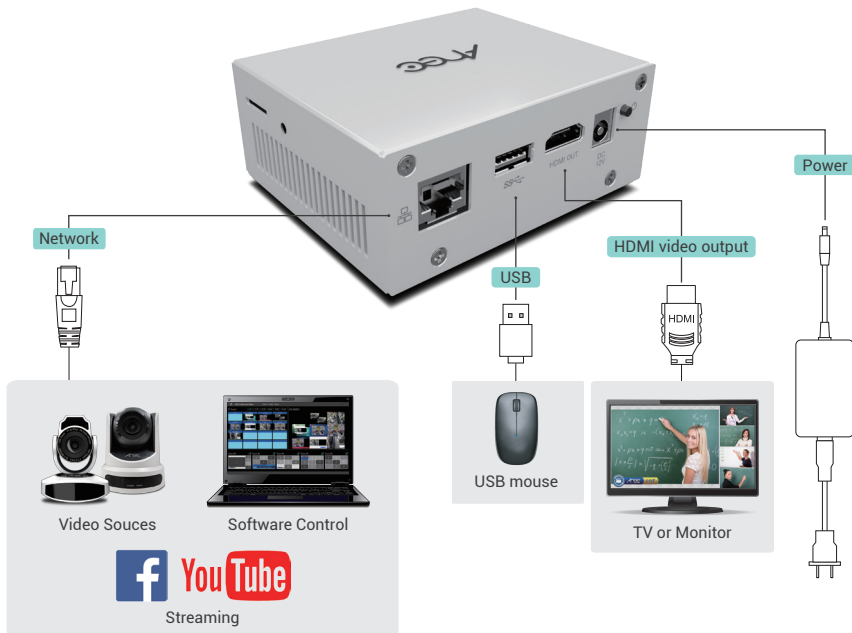


## Product Appearance



NO.	I/O Interface	Function Description
1	SD Card Slot	Reserved for future use
2	Reboot Button	Reboot the device
3	Network Port	RJ-45 Ethernet connector for network connection or remote control
4	USB Port	For mouse control
5	HDMI Out	Display or monitor selected video sources
6	Power Port	12V 3.34A
7	Power Button	When the device is ON, push twice to turn OFF Long press 3 seconds to restart When the device is OFF, push to turn ON.

## Connection



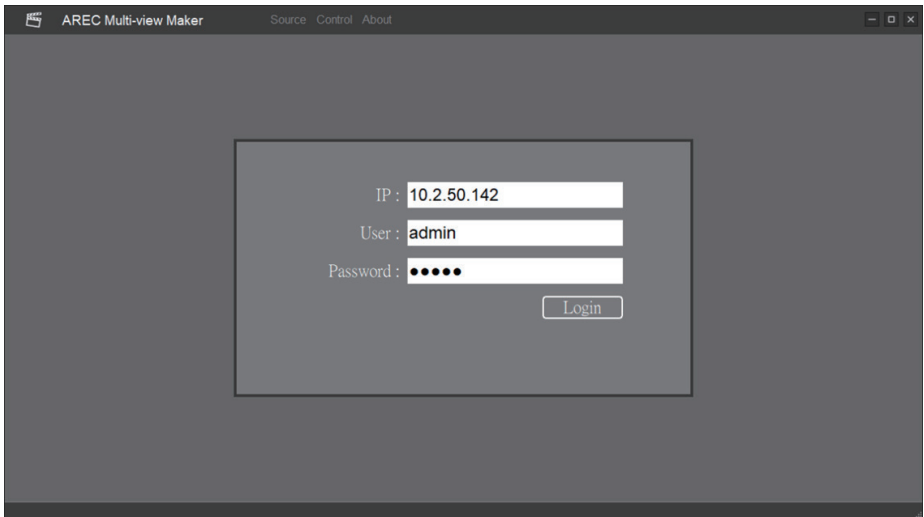
## Setup

DS-X09 only could work with "Multiview Maker" software to customize various output.

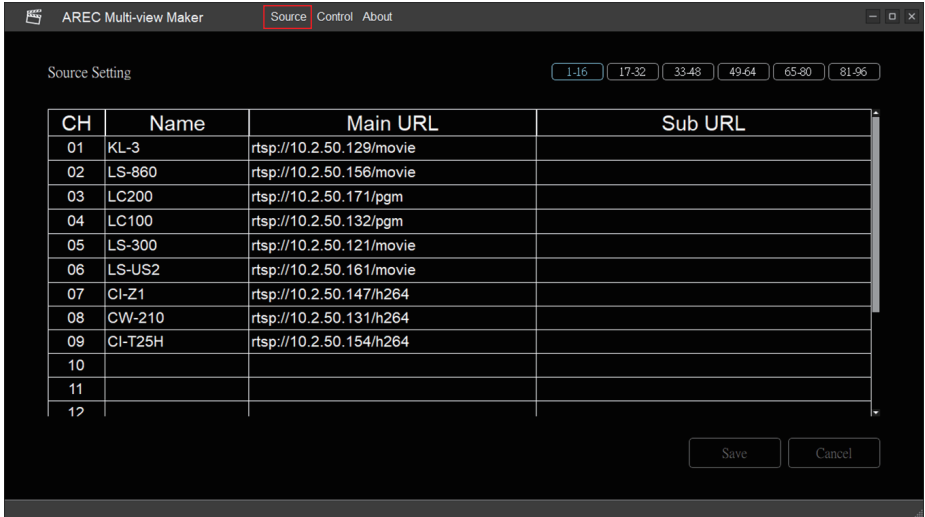
1. Contact your local distributor to get "Multiview Maker" software.
2. Using HDMI cable to connect DS-X09 output port with the monitor.
3. Check bottom-right corner of the monitor to get the IP address of the DS-X09.



4. Run Multiview Maker software. Input the IP address, account name(default: admin) and password(default: admin) of the DS-X09 to log in.



5. Go to Source tab and input all the streaming URL information to add video sources.

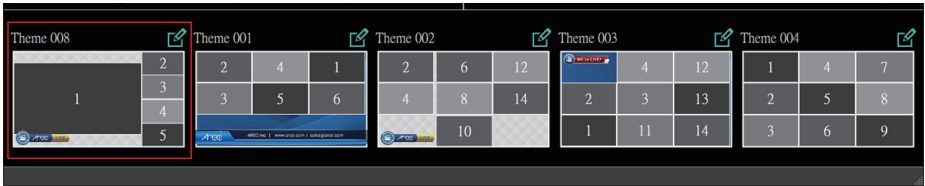


6. Go to Control tab to preview all the video sources.

Click the edit icon to edit output layouts.



7. After finishing editing , click on any themeOOX to apply.  
 DS-X09 will change the output to the one you assigned.



**CAUTION**  
**RISK OF EXPLOSION IF BATTERY IS REPLACED**  
**BY AN INCORRECT TYPE.**  
**DISPOSE OF USED BATTERIES ACCORDING**  
**TO THE INSTRUCTIONS**

## Important Security Policy .....

### ■ Precautions

1. Please open the product package carefully; we commend you keep this packaging for future transport, storage or maintenance use.
2. There are no switches or adjustment buttons required for operation inside this product, so for your safety, please do not open the casing on your own, or vigorously rotate, shake or use any other inappropriate ways to operate this product in order to avoid electrical shocks and voiding the warranty. You can contact a local dealer directly if you have any questions.
3. Heat will be generated during the use of this product; therefore there must be sufficient ventilation for the temperature of the unit to remain at a stable status. So please use the product under normal environments to prolong the usage life, and avoid installing it in the following environments.
  - Locations that are unstable or have incomplete planes
  - Locations with powerful magnetic fields
  - Locations where it is damp or may have water leakage
  - Locations that are too hot, close to heaters and air hoses, or be exposed to direct sun light for long periods of time
  - Locations that are dusty
  - Locations where there are possible shocks
  - Locations close to power amplifiers
4. If you notice smoke or odor coming from the product, please quickly remove the power cable and send it to a maintenance center for processing.
5. To avoid electrical shock, the plug of the adapter should be stably and completely inserted into the power outlet and cannot be exposed; it must also have sufficient capacity to withstand the current transmission. Please do not plug the adapter into the power outlet before connecting the cable in order to avoid danger.
6. If not used for long periods of time, please unplug the power plug, and to ensure electrical safety, when unplugging the adapter, please hold the plastic part of the adapter with dry hands and then unplug the adapter. Please properly connect the cables according to the printed instructions on the installation manual and the machine to ensure optimized usage effects.



---

AREC Inc.© All Rights Reserved 2023. | [www.arec.com](http://www.arec.com)  
All information contained in this document is Proprietary



Made in Taiwan  
Date : 2023.8.1