



# MV-01

## ARECare Intercom Solution

Quick Installation Guide | ENGLISH



All Rights Reserved 2023

All information contained in this document is Proprietary



## FCC

### Federal Communication Commission interference statement

This equipment has been tested and found to comply with the limits for a Class B digital device, pursuant to part 15 of the FCC rules. These limits are designed to provide reasonable protection against harmful interference in a residential installation. This equipment generates, uses and can radiate radio frequency energy and, if not installed and used in accordance with the instructions, may cause harmful interference to radio communications. However, there is no guarantee that interference will not occur in a particular installation. If this equipment does cause harmful interference to radio or television reception, which can be determined by turning the equipment off and on, the user is encouraged to try to correct the interference by one or more of the following measures: -Reorient or relocate the receiving antenna. -Increase the separation between the equipment and receiver. -Connect the equipment into an outlet on a circuit different from that to which the receiver is connected. -Consult the dealer or an experienced radio/TV technician for help.

### RF Exposure Warning

The equipment complies with RF exposure limits set forth for an uncontrolled environment. The antenna(s) used for this transmitter must not be co-located or operating in conjunction with any other antenna or transmitter.

You are cautioned that changes or modifications not expressly approved by the party responsible for compliance could void your authority to operate the equipment.

### FCC Caution

This device complies with Part 15 of the FCC Rules. Operation is subject to the following two conditions:

- (1) this device may not cause harmful interference and
- (2) this device must accept any interference received, including interference that may cause undesired operation

This equipment should be installed and operated with a minimum distance of 20 centimeters between the radiator and your body.

Notice: Any changes or modifications not expressly approved by the party responsible for compliance could void your authority to operate the equipment.



## CE

Hereby, AREC Inc., declares that this Media Station is in compliance with the essential requirements and other relevant provisions of Directive 2014/53/EU.

# CB

## CB

### CAUTION

Danger of explosion if battery is incorrectly replaced.

Replace only with the same or equivalent type.

- the ventilation should not be impeded by covering the ventilation openings with items, such as newspapers, table-cloths, curtains, etc.:
- no naked flame sources, such as lighted candles, should be placed on the apparatus;
- attention should be drawn to the environmental aspects of battery disposal;
- the use of apparatus in tropical climates.

the instructions for use shall state that the apparatus shall not be exposed to dripping or splashing and that no objects filled with liquids, such as vases, shall be placed on the apparatus.

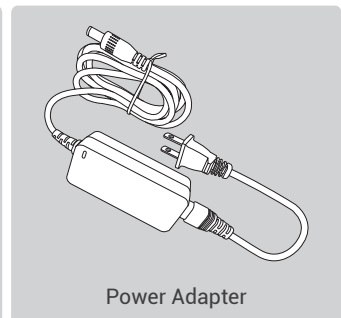
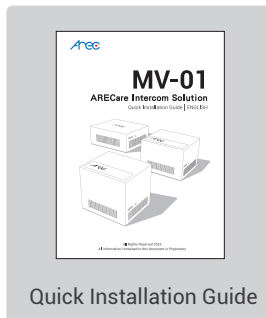
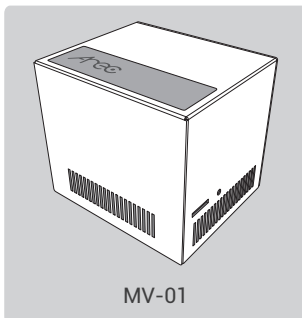
## Introduction

ARECare Intercom Solution includes 3 different kinds of I/O hardware for selection. Each model could be configured as Presenter mode or Viewer mode for two-way communication. Viewer mode supports Android/iOS apps for mobile devices. Make communication more convenient!

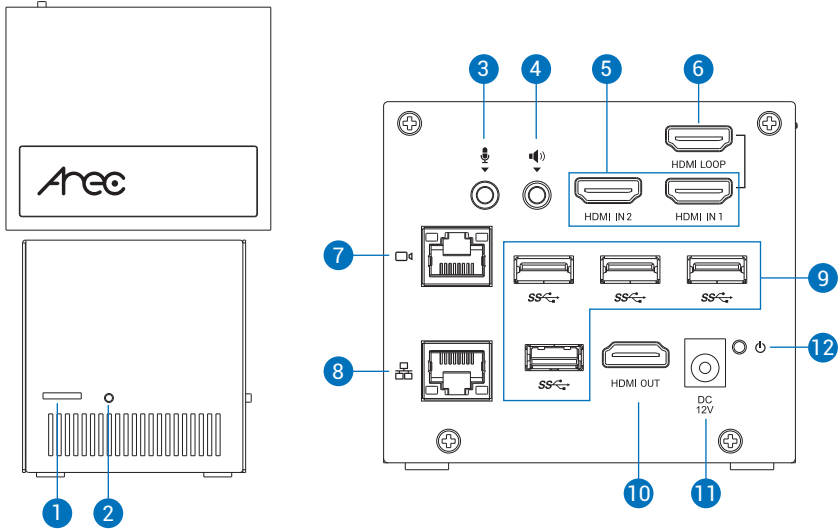
## Specifications

| Product Name                    | ARECare Intercom System  |                                |                                |
|---------------------------------|--|--------------------------------|--------------------------------|
| Model Name                      | MV-01S   | MV-01U                         | MV-01C                         |
| Dimension                       | 95mm(L) x 80mm(W)<br>x 83mm(H)   | 95mm(L) x 80mm(W)<br>x 65mm(H) | 95mm(L) x 80mm(W)<br>x 38mm(H) |
| Weight                          | 650g   | 490g                           | 330g                           |
| Power Requirement               | 12V  |                                |                                |
| Power Consumption               | 40W(Max.)  |                                |                                |
| Operating Temperature /Humidity | 0°C ~ 40°C / 90%   |                                |                                |
| Maximum normal load description | Supports 3 channel of video & audio signal input, include 2 HDMI and 1 IP Cam/Stream or UVC video, and one line-in or Mic-in audio. Output the transcoded video to the HDMI port(with GUI) and loop through one HDMI video source at the same time. Record the video file to the USB storage via USB port or SD card slot. |                                |                                |

## Package Contents



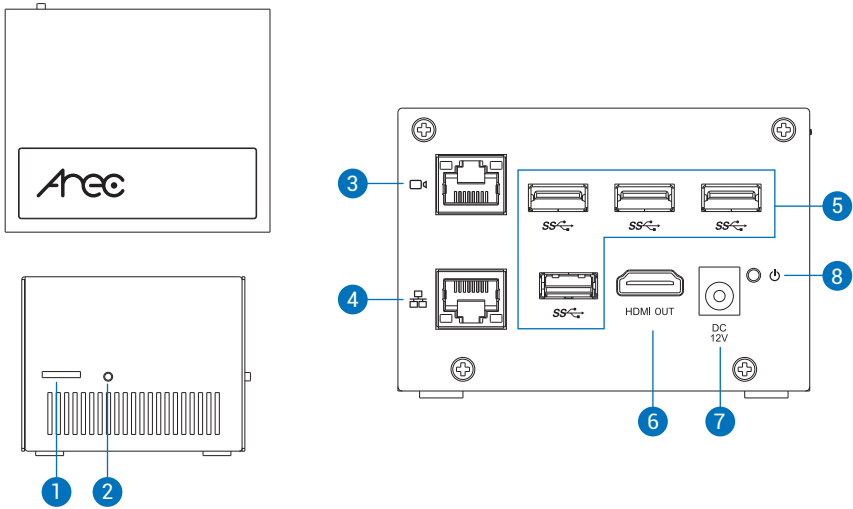
## Product Appearance



| NO. | I/O Interface | Function Description  |
|-----|---------------|---|
| 1   | SD Card Slot  | For internal storage of the recording videos  |
| 2   | Reboot Button | Reboot the device   |
| 3   | Mic-In        | Connected with microphone.  |
| 4   | Line-In       | Connected with audio mixer or amplifier   |
| 5   | HDMI-In 2     | HDMI input source, connected with PC or cameras.<br>(Max. 3840x2160@30Hz)   |
| 6   | HDMI Loop Out | Loop through HDMI video source (Max. 3840x2160@30Hz)  |
| 7   | LAN Port      | Connected with network cameras or PC/NB for settings  |
| 8   | WAN Port      | For the external communication or remote control.   |
| 9   | USB-in        | 1. Available for the USB audio/video inputs<br>2. Available for the USB mouse and touch devices<br>3. Available for the USB storage |
| 10  | HDMI Out      | Display graphic user interface, video, call list. (Max. 1920x1080@60Hz)   |
| 11  | Power Port    | 12V 3.34A   |
| 12  | Power Button  | When the device is ON, push twice to turn OFF<br>Long press 3 seconds to restart<br>When the device is OFF, push to turn ON.        |

\* NOTE : The MV-01 can detect and record to USB storage devices using FAT32, NTFS, exFAT, Ext3, Ext4 file systems.

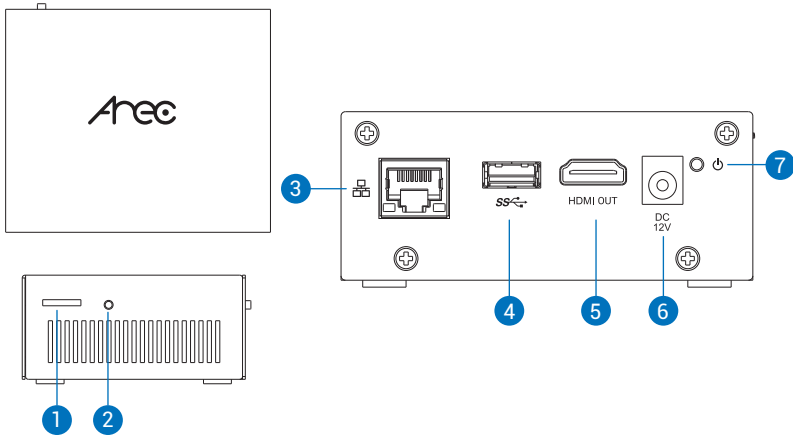
## Product Appearance



| NO. | I/O Interface | Function Description  |
|-----|---------------|---|
| 1   | SD Card Slot  | For internal storage of the recording videos  |
| 2   | Reboot Button | Reboot the device   |
| 3   | LAN Port      | Connected with network cameras or PC/NB for settings  |
| 4   | WAN Port      | For the external communication or remote control.   |
| 5   | USB-in        | 1. Available for the USB audio/video inputs<br>2. Available for the USB mouse and touch devices<br>3. Available for the USB storage |
| 6   | HDMI Out      | Display graphic user interface, video, call list. (Max. 1920x1080@60Hz)   |
| 7   | Power Port    | 12V 3.34A   |
| 8   | Power Button  | When the device is ON, push twice to turn OFF<br>Long press 3 seconds to restart<br>When the device is OFF, push to turn ON.        |

\* NOTE : The MV-01 can detect and record to USB storage devices using FAT32, NTFS, exFAT, Ext3, Ext4 file systems.

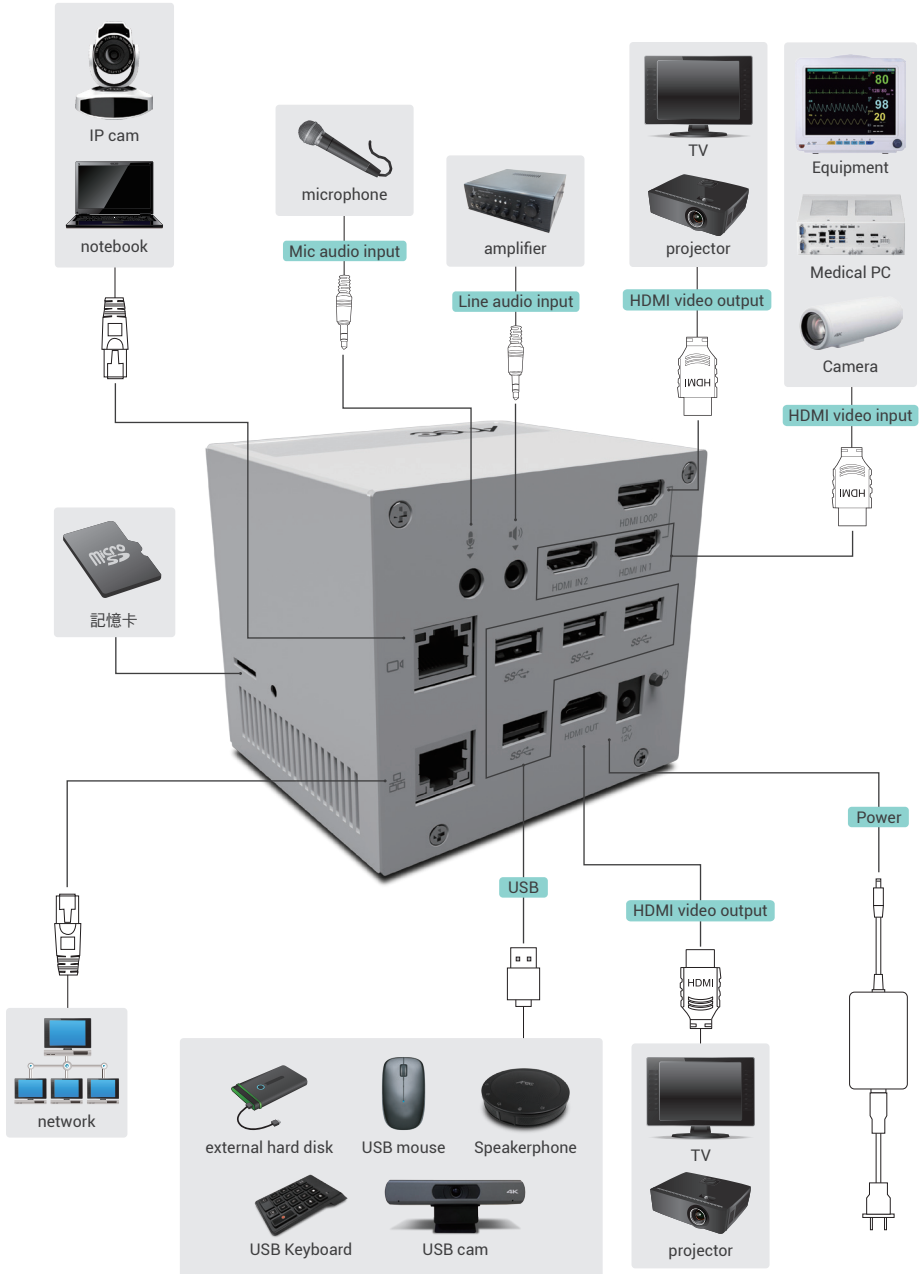
## Product Appearance



| NO. | I/O Interface | Function Description  |
|-----|---------------|---|
| 1   | SD Card Slot  | For internal storage of the recording videos  |
| 2   | Reboot Button | Reboot the device   |
| 3   | WAN Port      | For the external communication or remote control.   |
| 4   | USB-in        | 1. Available for the USB audio/video inputs<br>2. Available for the USB mouse and touch devices<br>3. Available for the USB storage |
| 5   | HDMI Out      | Display graphic user interface, video, call list. (Max. 1920x1080@60Hz)   |
| 6   | Power Port    | 12V 3.34A   |
| 7   | Power Button  | When the device is ON, push twice to turn OFF<br>Long press 3 seconds to restart<br>When the device is OFF, push to turn ON.        |

\* NOTE : The MV-01 can detect and record to USB storage devices using FAT32, NTFS, exFAT, Ext3, Ext4 file systems.

## Connection





## Getting start

### Connecting to network

Connect MV-01S/U/C to a router or switch. You would need to prepare a public IP or fixed IP for the MV-01 device which assigned to be the conference server.

Connecting with the Display and HID devices

MV-01 devices provide graphic user interface, you need a touch panel(1920x1080) or at least a display and a HID device to operate the functions. Connect your MV-01S/U/C with a touch panel via HDMI output and USB port.

### Configure video & audio inputs

#### Video Input

MV-01 devices support HDMI, UVC(USB Video Class), network cameras, and IP video sources.

1. Connect your video source.

- HDMI: Connect the source to HDMI input 1 or 2
  - \* If you intend to use your video source for other device/monitor, please connect the source to HDMI input and connect the other device to the HDMI loop-through port.
- UVC(USB): Connect the USB video source to the USB port.
  - \* If there are multiple USB devices needed for your case (USB cameras/mouse/flash drives... etc.), we recommend to use a USB hub which comes with its own power adaptor to provide more stability for your USB source and devices.
- Network camera or IP source: Connect the source under the same subnet with MV-01.

2. Go to the MV-01's web page to set the video input

- Open a browser and insert the MV-01's IP address. The IP address can be found on the GUI menu shown on display that connected to the HDMI preview output port. Click on the " ⚙️ " icon in the bottom tool bar to find the IP address of the device.

The image shows two overlapping screenshots from the MV-01 web interface. The background screenshot displays a table of device information:

|                    |                |
|--------------------|----------------|
| Hostname           | MV-01S         |
| Device description | Operation Room |
| IP Address         | 192.168.0.136  |
| Model              | MV-01S         |
| Version            | V7.6.3.3       |
| Brand              | AREC Inc.      |

The foreground screenshot shows the Administrator login page with the following fields and options:

- Administrator** (Section Header)
- Username**: Input field containing "admin"
- Password**: Input field containing "\*\*\*\*\*"
- Save the username and password
- Log in** (Button)

- Login the web administrator page with default username/password: admin/admin

### 3. Configure your video source

- HDMI & USB video source

Please select **"Video port"** in Signal type, and select the corresponding option in **"Video source"**. And click **"Apply"** to take effect.

**Video inputs**

Name : Content

Video source : HDMI  
Device name : HDMI  
Device number : 0

Signal type : Video port

Video source : HDMI

PTZ control : Not set

Apply

- Network camera

First, go to the Network device manager page and click scan to find your network camera. Click **"Login"** and insert the camera's ONVIF credential to register the camera.

Go back to the Video inputs page, and select **"Network Camera"** in Signal type and select the camera in IP address. Click **"Apply"** to take effect.

**Network device manager**

Network cameras

Scan

| Host name | IP address    | MAC               | Brand | Status | Connected |
|-----------|---------------|-------------------|-------|--------|-----------|
| CI-22H    | 192.168.0.175 | BC:BA:E1:03:05:75 |       | Login  | OK        |
| CI-T10    | 192.168.0.13  | BC:BA:E1:A1:00:13 |       | Login  | OK        |
| CI-403    | 192.168.0.190 | BC:BA:E1:A0:09:C9 |       | Login  | OK        |
| VC-A50P   | 192.168.0.15  | DC:E2:AC:01:60:18 |       | Login  | OK        |
| CI-333    | 192.168.0.136 | BC:BA:E1:A0:09:F7 |       | Login  | OK        |

**Video inputs**

Name : Cam1

Video source :

Signal type : Network Camera

IP address : 10.2.50.112(CI-T10)

PTZ control : Over IP (ONVIF)

Apply

## IP source

MV-01 supports RTP/RTMP/RTSP for video inputs. Please select "IP source" in Signal type and insert the correct stream URL in "Primary URL".

Click "Apply" to take effect.

Video source : rtsp://192.168.0.185:554

**2**

Name :

**Signal type :**

Protocol :

**Primary URL :**

Secondary URL :

PTZ control :

## Audio Input

MV-01 support multiple audio input types: Line-in/Mic-in/HDMI/USB audio input.

Connect your audio input source to the MV-01 and go to [web administrator](#) → [Media I/O](#) → [Audio page](#) to configure the volume level.

If you are using USB audio source, please select your USB audio device in the "USB Audio (UAC) settings" drop-down list.

- Media I/O
- Video inputs
- Network device manager
- Audio
- Display
- Video
- Storage
- Upload
- Conference
- System
- Account

### Audio

**Input volume control**

HDMI 1
Line in
Mic in

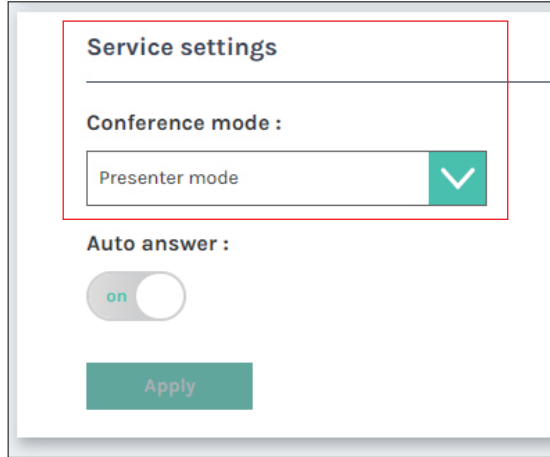
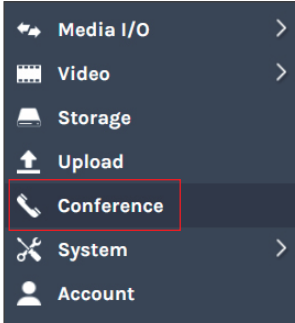
HDMI 2

100

**USB Audio (UAC) settings**

### Configure MV-01 User Modes

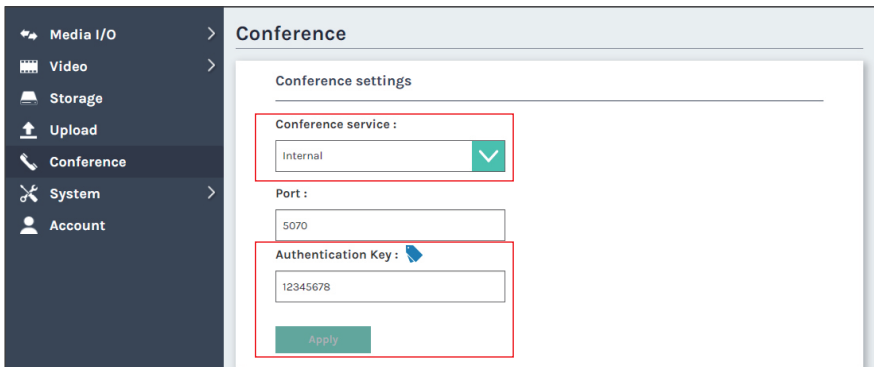
1. There are 2 modes for the selection, Presenter or Viewer mode. Go to the [web administrator](#) → [Conference](#) → [Service settings](#) → [Conference mode](#).
2. Click the “[Apply](#)” button to finish settings. The system will restart to make it valid.



## Configure Conference Related Settings

### Conference Server Settings

1. Go to the [web administrator](#) → [Conference](#) → [Conference settings](#).
2. Select Internal in the “[Conference service](#)” drop-down list.  
Change the Authentication Key and remember it.
3. Click on “[Apply](#)” to finish the settings.



### Configure conference clients

1. Go to the [web administrator](#) → [Conference](#) → [Conference settings](#).

2. Select External in the “[Conference service](#)” drop-down list.

Input the IP address of the conference server and 5070 as the communication port. Then Input the Authentication key, same as the conference server.

3. Click on “[Apply](#)” to finish the settings.

Media I/O

Conference

---

**Conference settings**

Conference service :  
 ✓

IP address :

Port :

Authentication Key : 🔑

Apply

4. Check the contact list on Presenter unit’s GUI or Conference server’s administration webpage, you could see a new device registered and show on the list.

Media I/O

Conference

---

**Conference settings**

Conference service :  
 ✓

IP address :

Port :

Authentication Key : 🔑

Apply

**Contact list**

Clear all

| Device description | MAC               | Conference version | Firmware |
|--------------------|-------------------|--------------------|----------|
| MV-01C             | 00-07-32-8E-AC-63 | 1.104.3            | v7.6.3.5 |
| MV-01S             | BC-BA-E1-0A-00-1A | 1.104.3            | v7.6.3.5 |
| faye               | FA-3A-6B-7A-E3-0B | 1.102.3            | 5.0.0.1  |

### Add a storage on your MV-01

For the recording purpose, you need to prepare a storage and mount into the device. Please insert a SD card or USB storage and do the format process as follow.

1. Open the browser and log into the admin webpage.
2. Go to [Storage](#) → [Disk Information](#), you will find the inserted storage. Click on “[Format](#)”.
3. Make sure you select the correct storage.

**Storage**

Record disk settings

Storage :

NAS settings

Mount :  
 off

Disk information

| Interface | Disk name  | Brand              | Capacity  | Free Space | Format                                |
|-----------|------------|--------------------|-----------|------------|---------------------------------------|
| USB       | Back USB 2 | SanDisk Ultra Luxe | 233.24 GB | 230.20 GB  | <input type="button" value="Format"/> |
| SD        | SD Card    |                    | 59.47 GB  | 8.47 GB    | <input type="button" value="Format"/> |

**CAUTION**  
**RISK OF EXPLOSION IF BATTERY IS REPLACED**  
**BY AN INCORRECT TYPE.**  
**DISPOSE OF USED BATTERIES ACCORDING**  
**TO THE INSTRUCTIONS**

## Important Security Policy

### ■ Precautions

1. Please open the product package carefully; we commend you keep this packaging for future transport, storage or maintenance use.
2. There are no switches or adjustment buttons required for operation inside this product, so for your safety, please do not open the casing on your own, or vigorously rotate, shake or use any other inappropriate ways to operate this product in order to avoid electrical shocks and voiding the warranty. You can contact a local dealer directly if you have any questions.
3. Heat will be generated during the use of this product; therefore there must be sufficient ventilation for the temperature of the unit to remain at a stable status. So please use the product under normal environments to prolong the usage life, and avoid installing it in the following environments.
  - Locations that are unstable or have incomplete planes
  - Locations with powerful magnetic fields
  - Locations where it is damp or may have water leakage
  - Locations that are too hot, close to heaters and air hoses, or be exposed to direct sun light for long periods of time
  - Locations that are dusty
  - Locations where there are possible shocks
  - Locations close to power amplifiers
4. If you notice smoke or odor coming from the product, please quickly remove the power cable and send it to a maintenance center for processing.
5. To avoid electrical shock, the plug of the adapter should be stably and completely inserted into the power outlet and cannot be exposed; it must also have sufficient capacity to withstand the current transmission. Please do not plug the adapter into the power outlet before connecting the cable in order to avoid danger.
6. If not used for long periods of time, please unplug the power plug, and to ensure electrical safety, when unplugging the adapter, please hold the plastic part of the adapter with dry hands and then unplug the adapter. Please properly connect the cables according to the printed instructions on the installation manual and the machine to ensure optimized usage effects.



---

All Rights Reserved 2023  
All information contained in this document is Proprietary



Made in Taiwan  
Date : 2023.01.01  
Version : 2.20